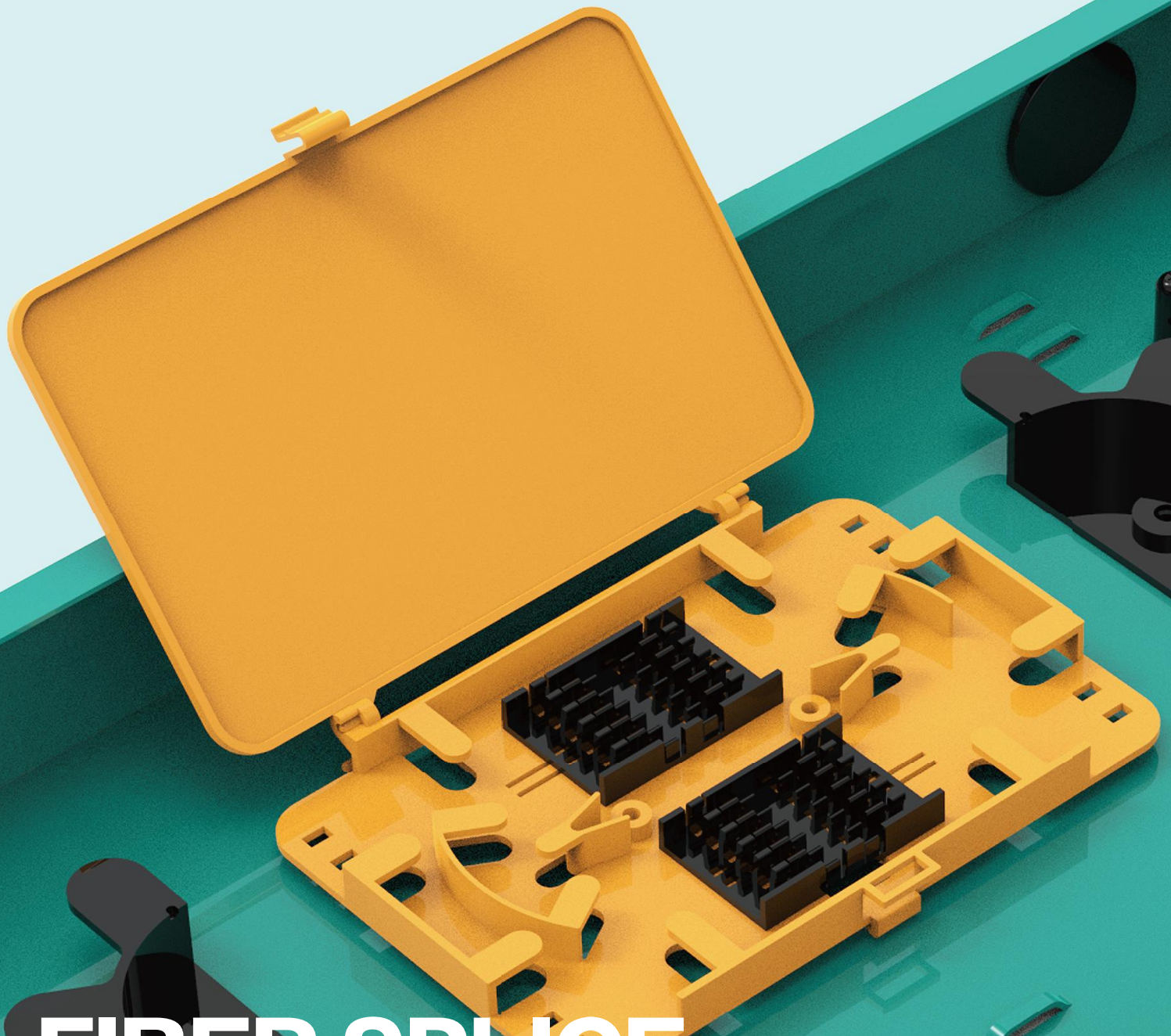


Enmane



# FIBER SPLICE PATCH PANEL

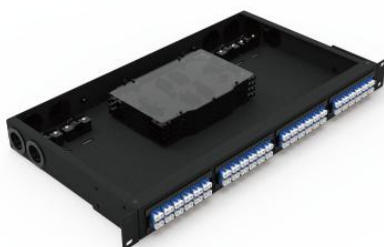


## Fiber Splice Patch Panel



### EM-F1U0201-03

Flexible for fiber patch or splice  
Fixed and simple design  
MAX 72F in 1U  
D type splice tray + 125 adapter plate  
Customized LOGO is available



### EM-F1U0202-04

Flexible for fiber patch or splice  
Fixed and simple design  
MAX 96F in 1U  
H type splice tray + 92 Adapter Plate  
Customized LOGO is available



### EM-F1U0203-03

Flexible for fiber patch or splice  
Metal slide rails  
MAX 72F in 1U  
D type splice tray + 125 adapter plate  
Tool-less flippable top cover for easier cable management



### EM-F1U0204-04

Flexible for fiber patch or splice  
Metal slide rails  
MAX 96F in 1U  
H type splice tray + 92 adapter plate  
Tool-less flippable top cover for Easier cable management



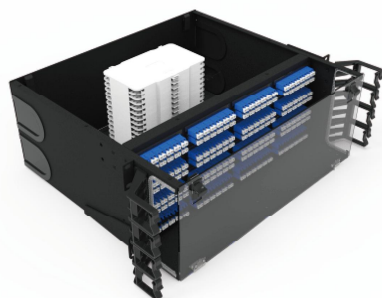
### EM-T1U0205-04

Tool-less installation to 19" Rack  
Suitable for all fixed panel no front cable tray  
Hanging hole design facilitates installation  
Flip down front door



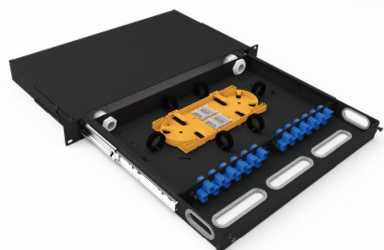
### EM-F3U0206-12

Flexible for fiber patch or splice  
Fixed and simple design  
MAX 144F in 3U  
G type splice tray + 92 adapter plate  
Customized LOGO is available



### EM-F4U0207-16

Flexible for fiber patch or splice  
Fixed and simple design  
MAX 384F in 4U  
G type splice tray + 92 adapter plate  
Transparent front panel



### EM-F1U0208-02

Flexible for fiber patch or splice  
Metal slide rails  
MAX 48F in 1U  
C type splice tray + 175 adapter plate  
Customized LOGO is available

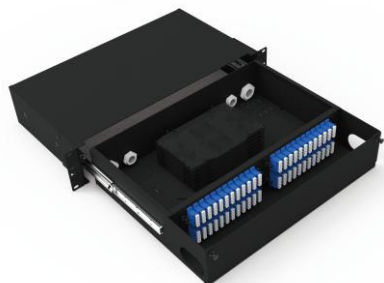


### EM-F1U0209-03

Flexible for fiber patch or splice  
Metal slide rails  
MAX 48F in 1U  
C type splice tray + 125 adaptor plate  
Customized LOGO is available



## Fiber Splice Patch Panel



### EM-F2U0301-02

Flexible for fiber patch or splice  
Metal slide rails  
MAX 192F in 2U  
H type splice tray + 175 adapter plate  
Customized LOGO is available



### EM-F2U0302-02

Flexible for fiber patch or splice  
Metal slide rails  
MAX 96F in 2U  
C type splice tray + 175 adapter plate  
Customized LOGO is available



### EM-F2U0303-03

Flexible for fiber patch or splice  
Metal slide rails  
MAX 96F in 2U  
C type splice tray + 125 adapter plate  
Customized LOGO is available



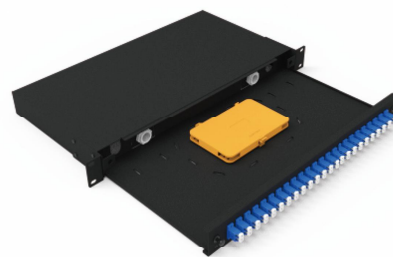
### EM-F1U0304-02

Flexible for fiber patch or splice  
Metal slide rails  
MAX 48F in 1U  
C type splice tray + 175 adapter plate  
Customized LOGO is available



### EM-F1U0305-03

Flexible for fiber patch or splice  
Metal slide rails  
MAX 72F in 1U  
D type splice tray + 109 adapter plate  
Customized LOGO is available



### EM-F1U0306-01

Flexible for fiber patch or splice  
Drawer type  
MAX 48F in 1U  
With cable gland for better cable fix  
Customized LOGO is available



### EM-F1U0307-03

Flexible for fiber patch or splice  
Drawer type  
MAX 72F in 1U  
With cable gland for better cable fix  
Customized LOGO is available



### EM-F1U0308-01

Flexible for fiber patch or splice  
Fixed and simple design  
MAX 48F in 1U  
C type splice tray + single adapter plate  
Customized LOGO is available



### EM-F1U0309-02

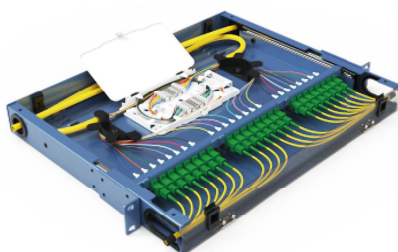
Flexible for fiber patch or splice  
Fixed and simple design  
MAX 48F in 1U  
C type splice tray + 175 adapter plate  
Customized LOGO is available

## Fiber Splice Patch Panel



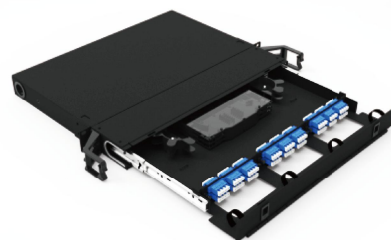
### EM-F2U0401-02

Flexible for fiber patch or splice  
Fixed and simple design  
MAX 96F in 2U  
C type splice tray + 175 adapter plate  
Customized LOGO is available



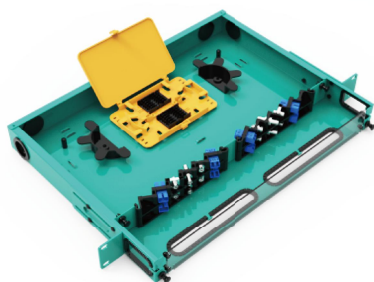
### EM-F1U0402-03

Flexible for fiber patch or splice  
Metal slide rails  
MAX 72F in 1U  
G type splice tray + LGX adapter plate  
Transparent Front Panel



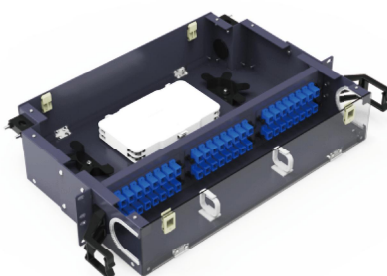
### EM-F1U0403-03

Flexible for fiber patch or splice  
Metal slide rails  
MAX 96F in 1U  
H type splice tray + LGX adapter plate  
Customized LOGO is available



### EM-F1U0404-02

Flexible for fiber patch or splice  
Fixed and simple design  
MAX 48F in 1U  
Angle plastic panel which is better for fiber radius  
Transparent front panel



### EM-F2U0405-03

Flexible for fiber patch or splice  
Fixed and simple design  
MAX 96F in 2U  
G type splice tray + LGX adapter plate  
Transparent front panel



### EM-F2U0406-03

Flexible for fiber patch or splice  
Triple section stainless steel slide rail  
MAX 144F in 2U  
H type splice tray + LGX adapter plate  
Transparent front panel



### EM-M1U0407-12

MPO modules and splice panel  
Fixed and simple design  
MAX 144F in 1U  
Plug-in ABS cassette for easy deployment  
Transparent front panel



### EM-M2U0408-24

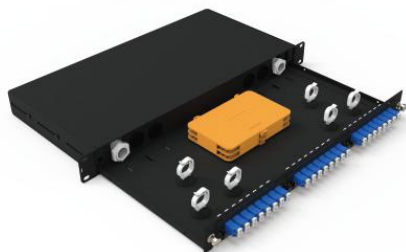
MPO modules and splice panel  
Fixed and simple design  
MAX 288F in 2U  
Plug-in ABS cassette for easy deployment



### EM-M4U0409-48

MPO modules and splice panel  
Fixed and simple design  
MAX 576F in 4U  
Plug-in ABS cassette for easy deployment

## Fiber Splice Patch Panel



### EM-F1U0501-03

Flexible for fiber patch or splice  
Drawer type  
MAX 48F in 1U  
C type splice tray + LGX adapter plate  
With cable gland for better cable fix



### EM-F2U0502-01

Flexible for fiber patch or splice  
Drawer type  
MAX 144F in 2U  
H type splice tray + unibody adapter plate  
Customized LOGO is available



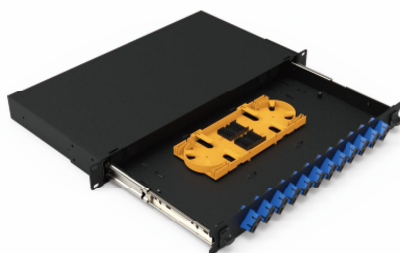
### EM-F1U0503-01

Flexible for fiber patch or splice  
Drawer type  
MAX 48F in 1U  
C type splice tray + unibody adapter plate  
With cable gland for better cable fix



### EM-F1U0504-02

Flexible for fiber patch or splice  
Metal slide rails  
MAX 48F in 1U  
C type splice tray + 175 adapter plate



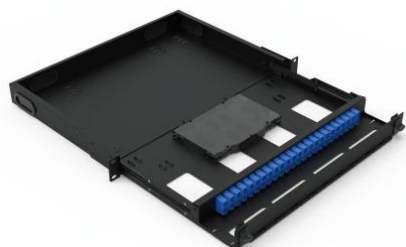
### EM-F1U0505-01

Flexible for fiber patch or splice  
Metal slide rails  
MAX 48F in 1U  
C type splice tray + unibody adapter plate



### EM-F1U0506-01

Flexible for fiber patch or splice  
Fixed and simple design  
MAX 48F in 1U  
With cable gland for better cable fix  
Customized LOGO is available



### EM-F1U0507-01

Flexible for fiber patch or splice  
Sliding and tilt-down drawer for easy operation  
MAX 96F in 1U  
H type splice tray + unibody adapter plate  
Customized LOGO is available



### EM-F1U0508-04

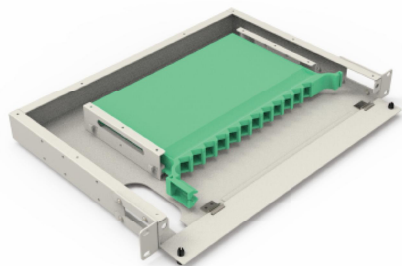
Flexible for fiber patch or splice  
Sliding and tilt-down drawer for easy operation  
MAX 96F in 1U  
H type splice tray + 92 adapter plate  
Customized LOGO is available



### EM-S1U0509-02

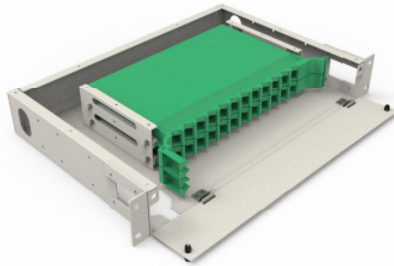
Standard 19" installation  
Hybrid fiber & copper application  
Easy switch the copper & fiber with transfer kit  
Plug-in cassettes for easy deployment  
With adjustable cable holder for fixing better

## Fiber Splice Patch Panel



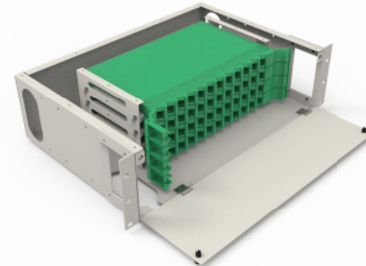
### EM-F1U0601-01

Flexible for fiber patch or splice  
Fixed and simple design  
MAX 24F in 1U  
Unibody splice tray  
Removable front door



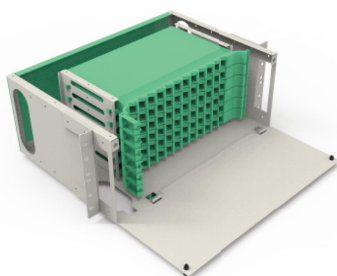
### EM-F2U0602-02

Flexible for fiber patch or splice  
Fixed and simple design  
MAX 48F in 2U  
Unibody splice tray  
Removable front door



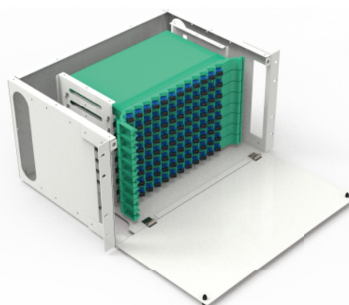
### EM-F3U0603-04

Flexible for fiber patch or splice  
Fixed and simple design  
MAX 96F in 3U  
Unibody splice tray  
Removable front door



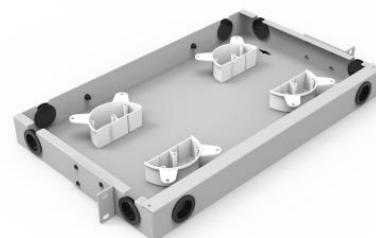
### EM-F4U0604-06

Flexible for fiber patch or splice  
Fixed and simple design  
MAX 144F in 4U  
Unibody splice tray  
Removable front door



### EM-F5.5U0605-08

Flexible for fiber patch or splice  
Fixed and simple design  
MAX 192F in 5.5U  
Unibody splice tray  
Removable front door



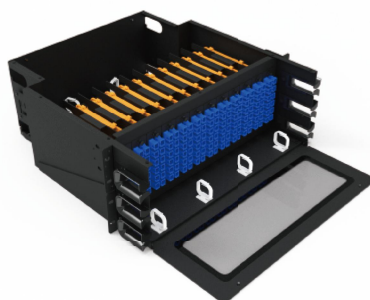
### EM-F1U0606-01

Fiber storage box  
Fixed and simple design  
Mainly used for store the extra cable



### EM-F1U0607-02

Flexible for fiber patch or splice  
Rotary drawer with flippable cover  
MAX 48F in 1U  
C type splice tray + 165 adapter plate  
Customized LOGO is available



### EM-F4U0608-12

Flexible for fiber patch or splice  
Fixed and simple design  
MAX 288F in 4U  
D type splice tray + module plate  
Transparent front panel